



National Equipment Tracking and Information System

Strengthening decision-making by providing a detailed, consolidated view of medical equipment assets across the NHS.

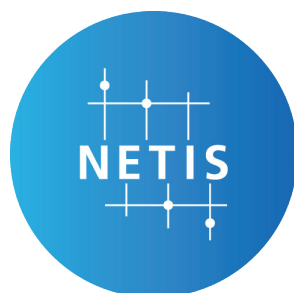
For Customers



Overview

NETIS is a comprehensive, user-friendly platform that will consolidate medical equipment asset data from NHS trusts across the UK to provide an accessible, coherent view of the NHS landscape.

This holistic, real-time perspective will enhance decision making at a national, regional and local level, providing opportunities to reduce costs, through economies of scale, alongside strengthening resilience and improving patient outcomes by ensuring that the **right product is in the right place at the right time**.



Benefits

Supports With National Policy Decision Making

System reporting and analytics will enable our Government, and key NHS bodies* to make data-driven decisions on a national scale, whilst also supporting long term systemic change.

*NHS England, NHS Supply Chain, the Department for Health and Social Care, the Medicines and Healthcare products Regulatory Agency.

Informs Strategic Replacement Decisions

The enhanced, overarching view provided by NETIS enables strategic purchasing decisions to be made, releasing funds through aggregation opportunities that can be invested in to new, and existing, technologies to improve patient pathways and deliver better outcomes.

Improves Management and Efficiency

Equipment fleets, including maintenance and service arrangements, can be managed more effectively by having detailed visibility of asset data, including 'end-of life' date.

Increases Resilience

A national view of assets, available in real time, ensures that appropriate, efficient action can be taken should a sudden surge in demand arise. The Covid-19 pandemic highlighted how important it is to have the **right product in the right place at the right time**. Instantly knowing equipment locations and capabilities not only strengthens day-to-day resilience, it improves NHS responsiveness to large-scale events.

Engagement and Timelines

NHS Supply Chain is working in collaboration with the following stakeholders who are contributing valuable knowledge, data and insights to the project:

- Key government bodies
- Industry standard agencies
- NHS trusts
- Medical Equipment Management Software (MEMS) providers
- Equipment and Maintenance providers



April 2023 - March 2024

Deliver a Proof of Concept using existing data.

Complete

April 2024 - March 2026

Deliver a system that is accessible to all NHS employees with a minimum of 80% of NHS trust medical equipment asset data included.*

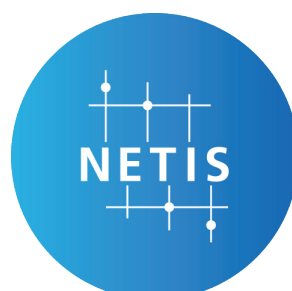
In Progress

April 2026 Onwards

Deliver complete national asset coverage and drive further system developments, with an initial focus on asset utilisation.

In Development

*Asset volume has been calculated based on total NHS Supply Chain sales, taken from the period April 2024 – March 2025.

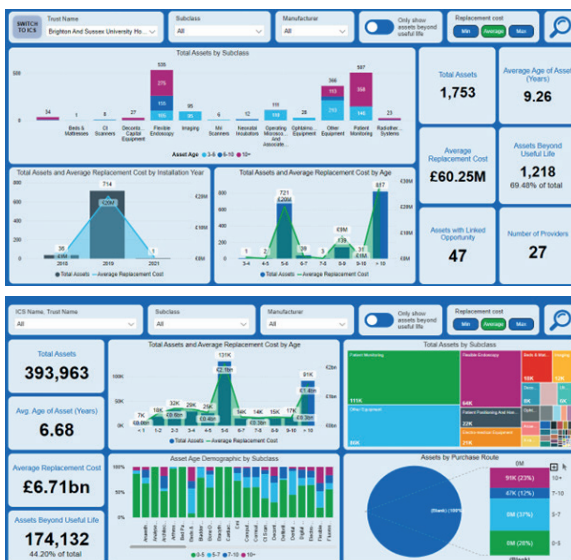


Asset Data

NETIS will include frequently updated asset data, obtained from various sources, for the following category areas:

- Radiology, Oncology and Radiotherapy (fixed equipment)
- Diagnostic Equipment (including endoscopy and ultrasound)
- Medical Devices (for example patient monitors and ventilators)

For a full list of the areas covered, please contact the NETIS project team on the email provided below.



Our Ask

The success of NETIS is underpinned by the quality and quantity of asset data within the system.

An essential route for obtaining the required asset data is directly from trusts, therefore we ask for your support in maximising the benefits that NETIS will provide for the NHS by sharing your data with us.

Please note that data is for representative purposes only

Contact

For further information please contact the NETIS project team at NETIS@supplychain.nhs.uk